



Title:

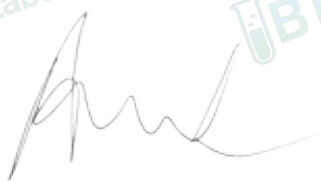
Certificate of Analysis (CoA)

Date: 3/31/2026
Date Tested: 3/30/2026
Customer: Vici Peptides
Testing material: KLOW
Lot Number: KLOW80-2603-02
BT Sample ID: 005000039443633
Labeled Peptide
Content/Potency: 80 mg
Storage: R.T.
Visual Description: Small clear vial: purple sample, holographic label, silver crimp, dark blue plastic cap.
Labeled as: KLOW
Manufacturer: N/A
Testing Purpose: FTIR and HPLC analysis for the identification, purity, potency and composition of a peptide product. It does not provide information on particulate matter, microbial contamination or presence of endotoxins.



Test	Method	Specification	Result
General Appearance	USP <630>	purple powder	purple powder
Mass	USP <41>	As recorded	161.6 mg
FTIR Identification and Composition Analysis	USP <197A>	Sample spectrum should confirm the content of peptide via characteristic bands	FTIR sample spectrum confirms the presence of KLOW with addition of excipient(s)/fillers.
HPLC Purity of Peptide Assay	USP <621>	Specifications: $\geq 98\%$	99.7 %
HPLC Potency Assay	USP <621>	Specifications: 90 – 110% of 80 mg	GHK-Cu 44.5 mg (55.6 %) KPV 10.6 mg (13.2%) BPC-157 10 mg (12.4%) TB-500 11.0 mg (13.8%)
Peptide-to-Excipients Ratio	USP <1151>	Recommended ratios of (1:2) to (1:10) for (peptide: excipients)	76.1 : 85.5 mg (1:1.1)

The results of the CoA relate only to the item(s) tested and applied to the sample as received.



Andrea Castro, AS
Scientist-II
BTLabs



Verna Zheng, AS
Scientist-II
BTLabs

5730 Corporate Way | Suite 220 | West Palm Beach, FL 33407
Phone: (561) 625-0133

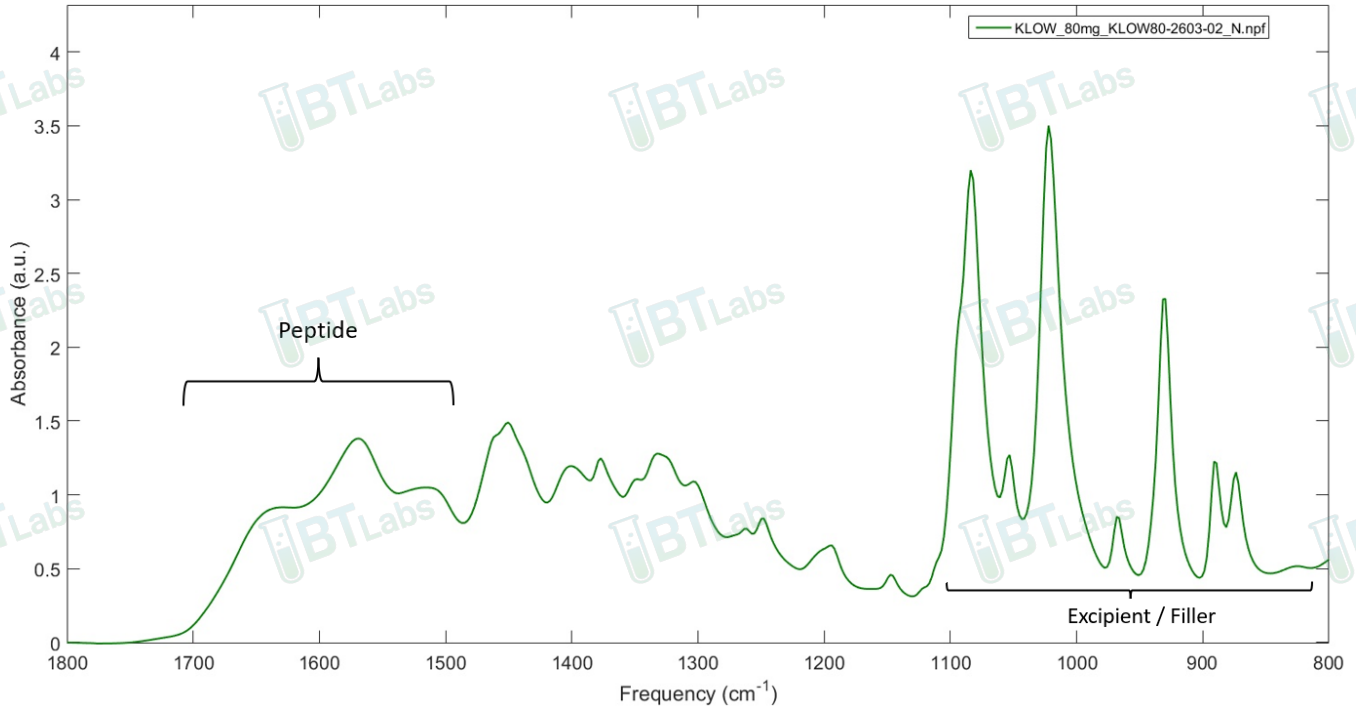
E-mail: info@btlabtesting.com | Website: <https://btlabtesting.com>



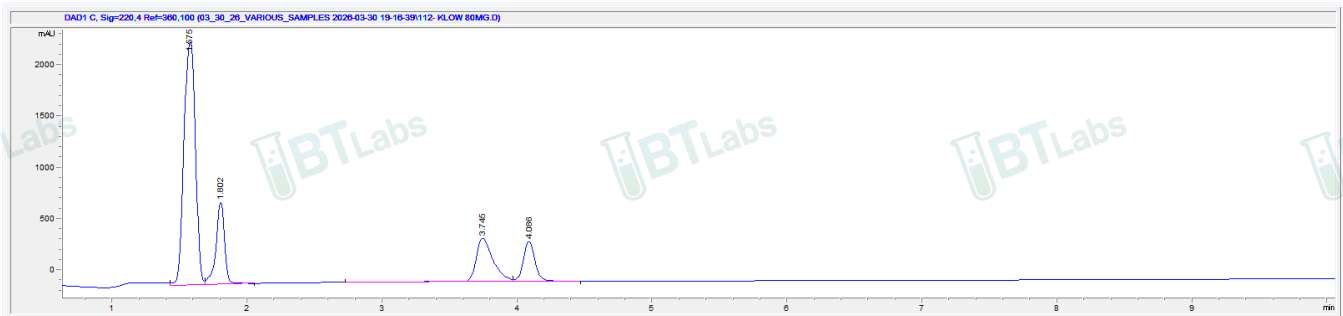
Title:

Certificate of Analysis (CoA)

FTIR ID and Composition Analysis: KLOW Lot KLOW80-2603-02



HPLC Purity and Potency Assay @ 220 nm: KLOW Lot KLOW80-2603-02



BPC-157 GHK-Cu TB-500 KPV Lot KLOW80-2603-02 @ 220 nm

Peak #:	Retention Time (min)	Area (mAU*s)
1	1.575	14114.4
2	1.802	3516.4
3	3.745	3817.3
4	4.086	2361.7

5730 Corporate Way | Suite 220 | West Palm Beach, FL 33407
Phone: (561) 625-0133

E-mail: info@btlabtesting.com | Website: <https://btlabtesting.com>